

Gravure Cleaner

The fully automatic gravure cylinder cleaners are designed to deep clean/restore gravure cylinders of all sizes. Furthermore it is also a very good tool for the daily washing and maintenance of cylinders.

The quick and gentle cleaning process leaves the cylinder totally clean and ready for immediate use after just 10-20 minutes cleaning without causing any wear or tear to the cylinder.

This makes it possible to keep your gravure cylinders totally clean at all times ensuring a constant and high print quality and a long lifetime of the cylinders.

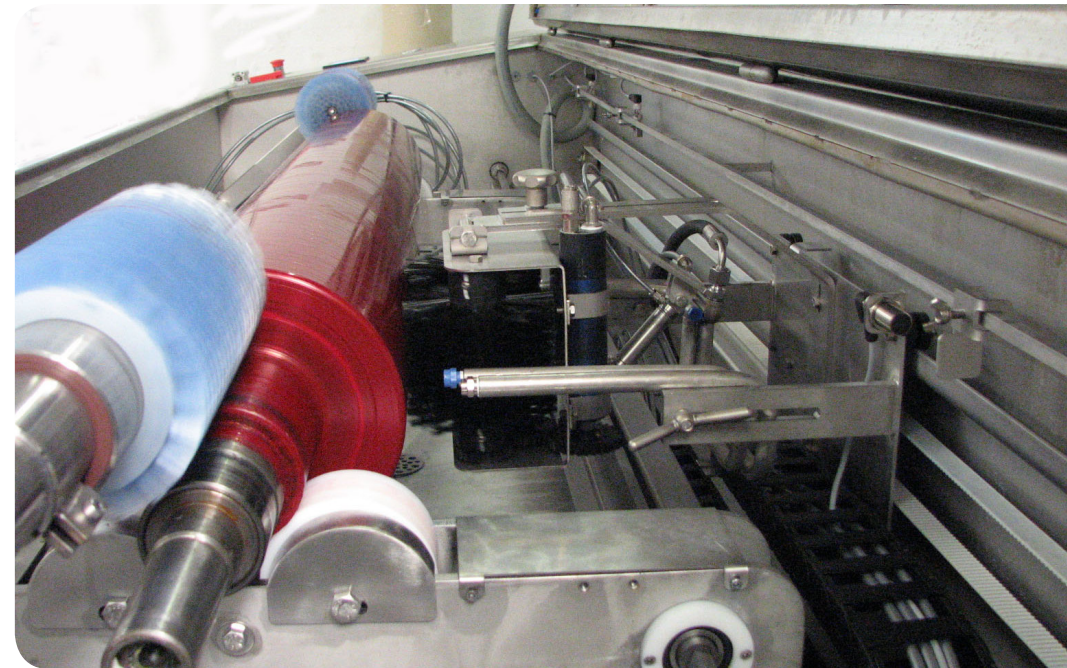
The Gravure Cleaner is an advanced PLC controlled machine, which can be operated by all types of personnel. It does not require a profound knowledge to operate the machine.

The Gravure Cleaners meet your cleaning needs:

The different models and sizes offer various options but all have these common characteristics:

The cylinder gets absolutely clean without any wear or tear.

The units are also very adequate for cleaning of anilox rolls, sleeves or plates. A complete range of sleeve adapters and plate drums are available.



Gravure Equipment

- Rotating Brushes for Shafts
- Rotating Brushes for Cylinder Surfaces
- Heavy Duty Roll Station with Ball Bearings
- Stainless Steel
- Large Capacity High-Pressure Pump

Quick and Efficient Cleaning:

1. Place the cylinder in the machine, close the lid and press start.
2. The cylinder rotates while cleaning liquid is sprayed on it. Brushes make sure that shafts and cylinder surface are cleaned thoroughly (optional)
3. At the end of the wash cycle liquid is drained back to the tank for re-use.
4. High pressure water is sprayed on the cylinder removing all ink residues and cleaning liquid.
5. The cylinder is dried by means of compressed air.

Eco-friendly Cleaning:

The Gravure Cleaners work with environmentally friendly cleaning liquid, which is specially made for deep cleaning of cylinders with all types of ink. For anilox rolls, print sleeves and plates auxiliary liquids in a separate built-in tank is recommended.

The water from the high pressure rinse is automatically led directly to the drain, to a tank for re-use or to one of our water treatment units. The water consumption is only 10 litres for each roll meter.

Options and Accessories:

- Extensions of machine for cleaning extra roll.
- Drum for plate cleaning.
- Adaptor for sleeves.
- Double tank system for 2nd cleaning liquid.
- Drainage tank for re-use of rinse water.
- Waste water treatment unit.
- Automatic liquid filling system.
- Rotating brushes.



Gravure Cleaner	FW 3000 Gravure	FW 3500 Gravure	FW 4000 Gravure	FW 4500 Gravure
Max Diameter (mm)	450	450	450	450
Max Length incl Shaft (mm)	2800	3300	3800	4300
Max Cleaning Length (mm)	1600-2500	2100-3000	2600-3500	3100-4000
Max Weight (kg)	1000	1000	1000	1000
Number of Cylinders	1	1	1	1
Machine Dimensions (LxWxH) (mm)*	3500x1200x2150	4000x1200x2150	4500x1200x2150	5000x1200x2150
Power Supply	3x400V+N+PE	3x400V+N+PE	3x400V+N+PE	3x400V+N+PE

* Height of machine with open lid
- Larger units available on request

Grenåvej 631K
8541 Skødstrup
Denmark
Tel.: +45 86 99 36 31
Fax: +45 86 99 13 43
www.flexowash.com
info@flexowash.com